

# Beechwood Village

NEWSLETTER

Issue 45: June 2023

Welcome to the latest issue of our  
**Beechwood Village** newsletter.

[www.swan.org.uk/beecewood](http://www.swan.org.uk/beecewood)

## REGENERATION UPDATE



Now that Swan is part of Sanctuary, their development team will be looking after all Swan's regeneration projects.

Sanctuary is committed to providing much-needed affordable new homes to communities and has experience of delivering large, high-quality developments.

**Sarah Brind**, Head of Development – South for Sanctuary, and her team, will be leading on the Beechwood regeneration. Sarah has worked for Sanctuary since 2004 and has experience of delivering a range of new housing developments.

Get in touch with Sarah and her team by emailing [improvement@swan.org.uk](mailto:improvement@swan.org.uk)

### **Beechwood West**

Beechwood West is progressing well. Once phase west is complete, we will have created **667 new homes** - 233 for affordable rent and 33 for affordable home ownership. As well as providing **The Beech Community Hub** and local shops.

### **Beechwood South**

**Sanctuary** is doing a review of all Swan's regeneration schemes to ensure they will deliver for their local communities and are financially viable. We understand that you're keen to know the plans for Beechwood South. We cannot provide a timescale for Sanctuary's review at this point, but we will provide an update as soon as we can.

### **Beechwood North**

We understand that residents are keen for the demolition to begin on phase North. **Sanctuary** is confirming the programme for these works. We have completed the disconnection of gas and electricity supplies in preparation for the works. Before demolition can begin, a land transfer needs to be completed to give us ownership of this area. A demolition contractor also needs to be appointed and Sanctuary is working on this tender. Demolition work will begin later this year. We will let you know dates for this as soon as possible.

Until work starts, security guards will continue to patrol the site. If you witness illegal entry to the blocks, please contact security on **0208 2895 858** or **0333 400 1888**. Criminal behaviour should be reported to the police.

## Keep your estate tidy.

Put your litter in the bin.

Or face a fine of up to £120.



# WHAT'S ON

**OPEN TO ALL**

- Find out more about what's on at
- [www.swan.org.uk/WhatsOn](http://www.swan.org.uk/WhatsOn)
- 

## Stop the hunger

Stop the Hunger has started a grocery card\* scheme. For a £5 donation, you get a grocery card to purchase £10 worth of groceries. The card can be used Tesco.

*\*The grocery card cannot be used to buy alcohol, tobacco or lottery tickets.*

## Rosa Nova Foundation coffee morning for older people

**Come along for a cuppa and a chat!**

- 📍 The Beech Community Hub
- 📅 Tuesdays | 10am - 12noon (term time only)



## BAME Youth Club

Run by The Flex Youth & Community Group

- 📍 The Beech Community Hub
- 📅 Tuesdays | 4pm - 8pm



## Despite all the Odds

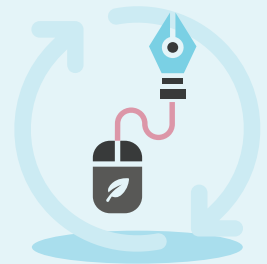
A listening ear and confidential support service for anyone experiencing domestic abuse. Domestic abuse isn't just physical violence; it is controlling, coercive, threatening or degrading behaviour.

- 📍 The Beech Community Hub
- 📅 Thursdays | 5pm - 7pm



## We're going digital!

We are taking steps to look after the planet. This newsletter will be going digital to help reduce our carbon footprint. Keep up-to-date at [www.swan.org.uk/beechnwood](http://www.swan.org.uk/beechnwood)



If you have an enquiry about the Beechwood Village regeneration, please contact us:

**By phone:** 0300 300 2500 | **By email:** [involvement@swan.org.uk](mailto:involvement@swan.org.uk)

*\*all information correct at time of going to print*